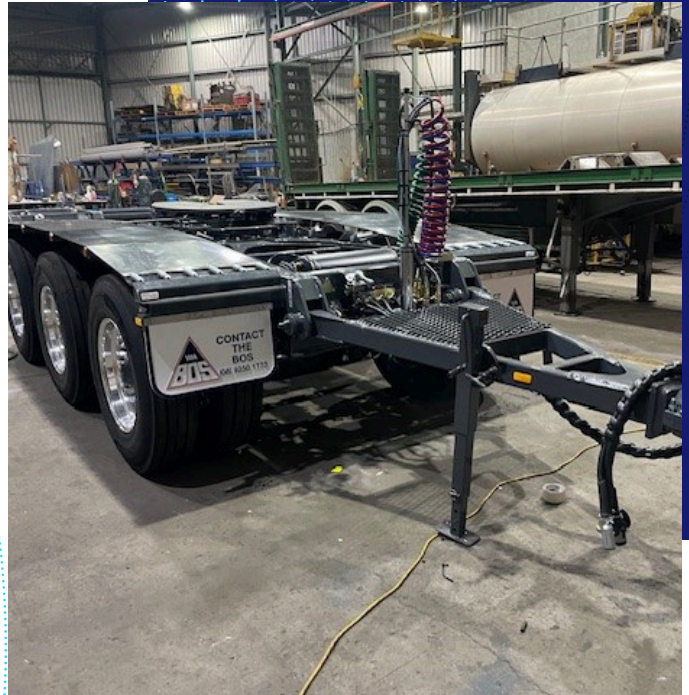




WA BOS "Tanami" tri-axle dolly.

HEAVY DUTY, RUGGED TERRAIN USE



ENGINEERED FOR TOUGH ENVIRONMENTS

WA Bos has worked with customers who operate heavy haulage operations all over the Australian outback. Made for the toughest roads in the country including the Pilbara, Kimberly and Tanami Desert regions. High build quality, sound engineering and thirty years' experience have produced the "Tanami-spec" Dolly.

Features

Built for the heaviest use environments, the Tanami features heavy duty components across the board. The dolly fabricated to meet the requirements of Australian Design Rules (ADR) for design, fabrication, welding, safety, and road compliance.

- ✓ Fuel Transport
- ✓ Grain Transport
- ✓ Heavy Tippers
- ✓ Corrugated roads
- ✓ Heavy Braking Requirements
- ✓ Optimized Payload



Axles, Suspension & Brakes

- Fully integrated running gear modules
- Air suspension
- Electronic Brakes
- Forged or laser-cut components reduce tare weight.
- Improves payload and fuel efficiency without compromising strength.



Wheels

- ALCOA Rims (Lvl 1)
- Forged Aluminium Construction
- 47% lighter than steel
- Brushed/machine-finished surface
- Crack, impact and bending resistant
- Corrosion resistant



Electrical and controls

- All lighting and reflectors to meet ADR 13/00
- Tail, stop and indicator lamps
- Side marker and number plate lamps
- Electrical control wiring to meet ADR42, ISO 7638 and SAE J560
- Meet NHVR PBS standards for PBS combination



Turntable

- Heavy duty ballrace bearing
- Robust Construction
- Designed for high D-Value and V-Value ratings
- Low maintenance
- Allows rotation while still accommodating some torsional flex
- Meets ADR 62/02 and AS 4968.2 requirements



Complete design, build, and lifecycle support for specialised heavy transport trailers & equipment



+61 (0)8 9250 1773



18 Robinson Road,
Bellevue, WA 6056



www.wabos.com.au



admin@wabos.com.au